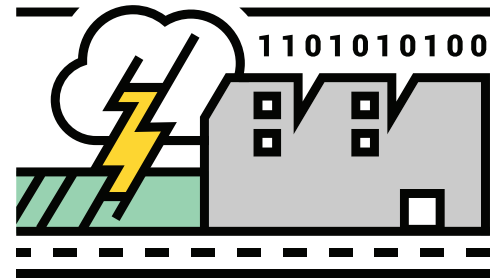


Business Recovery Resources



LONG-TERM NEEDS

For longer term support to help stabilize your business into the future, consider the following steps and resources:

INSURANCE



Review your coverage with your agent and reassess the type and amount of coverage you need for your business.

Have questions or complaints about your insurance coverage?

- **Oregon:** Department of Consumer and Business Services Division of Financial Regulation df.oregon.gov or 888-877-4894
- **Washington:** Office of the Insurance Commissioner insurance.wa.gov/ask-us-insurance-question or 800-562-6900

PROPERTY DAMAGE OR LOSS



If you lost any structures during a disaster, please reach out to your **county planning department prior to rebuilding.**

- Hood River County
541-387-5210
- Wasco County
541-506-2560
- Sherman County
541-565-3601
- Klickitat County
509-773-5703
- Skamania County
509-427-3900

If you have lost any structures, you may be entitled to property **tax relief.** Please contact your **county Assessors' Office:**

- Hood River County
541-386-4522
- Wasco County
541-506-2510
- Sherman County
541-565-3505
- Klickitat County
509-773-3715
- Skamania County
509-427-3720

TECHNICAL ASSISTANCE



Small Business Development Center provides technical assistance to businesses in developing a recovery plan and assessing economic injury. Counseling is confidential and at no charge to the affected businesses.

- Sherman, Wasco, most of Hood River counties: bizcenter.org/centers/columbia-gorge-sbdc/
- Cascade Locks: bizcenter.org/centers/mt-hood-sbdc/
- Skamania County: wsbdc.org/vancouver/
- Klickitat County: wsbdc.org/yakima/

STAY CONNECTED



Keep in touch with your fellow business owners, chambers, and networks for ideas and collaborations.

Contact your local, regional, and state-wide tourism marketing organizations for marketing support and tourism promotion strategies moving forward.

- Oregon: hood-gorge.com
- Washington: watourismalliance.com

Find more resources on the MCEDD website: mcedd.org/ready
Connect to 2-1-1 or 211.org for additional services not found here.